



Dual Scoring using default rating  
and wind indexed ratings

Huw Pearce

[Huw@sailwave.com](mailto:Huw@sailwave.com)

---

## DOCUMENT VERSION HISTORY

<i>Date</i>	<i>Author</i>	<i>Notes</i>
August 2020	Huw Pearce, Sailwave User Group	First version of document

## ACKNOWLEDGEMENTS

Colin Jenkins and Jon Eskdale for creating and maintaining such a flexible piece of scoring software.

## SUGGESTED IMPROVEMENTS TO THE DOCUMENTATION

Please point out any sections within this guide that are incorrect, out of date, or inadequate in some way, by sending suggestions to Huw Pearce using the Sailwave User Group [SUG] forum <https://forum.sailingresults.co.uk/>, referencing the page or section in question, along with wording for the suggested improvement, correction or addition. Alternatively send an email to [huw@sailwave.com](mailto:huw@sailwave.com).

---

## Table of Contents

Overview.....	3
Get Going in One Page! .....	4
The steps in detail! .....	5
Create wind indexed rating file. ....	5
Put rating file in ratings folder.....	6
Select wind index and aliases option .....	7
Enter competitors .....	7
‘Tag’ competitors .....	7
Create competitor aliases .....	8
‘Tag’ aliased competitors .....	9
Configure scoring system .....	9
Configure race data .....	11
Enter race finish data .....	13
Score series .....	13
Publish results .....	14

## OVERVIEW

This document will describe the steps required to configure Sailwave to dual score a series using default ratings and wind indexed ratings from entering finish data only once. The document assumes that you have already installed Sailwave and have used it for scoring a single series. If you have not used Sailwave before I suggest you download the Sailwave User Guide & Reference Manual from the Sailwave web site - <https://www.sailwave.com/help-reference/sailwave-user-guide> - before attempting to follow this guide.

Sailwave

## GET GOING IN ONE PAGE!

- Create a rating file which includes wind indexed ratings. For information the only known source of wind indexed ratings is US Sailing and their data has not been updated since 2017.
- Put the wind indexed rating CSV file in the ratings folder pointed to on the *Folders* tab of *Set up* | *Global options* on the *Menu Bar*.
- Select from on *Set up* | *User interface* on *Menu Bar*, Wind indexed ratings and Competitor aliases.
- Import using CSV file or manually set-up competitors.
- Tag competitors entered in Fleet field / column with say "Default rating" using *Tools* | *Set competitor field*.
- Create competitor aliases using *Edit* | *New competitor aliasing* from *Menu Bar*.
- Tag aliased competitors in the Fleet field / column with say "Wind Indexed" using *Tools* | *Set competitor field* or manually.
- Click *Scoring system* button on Tool Bar and select Ratings tab followed by selecting PY rating system.
- Now click *Fleet* tab in *Scoring system* window and click New button.
- Select what you have just created and click Edit button. In the window that appears change the words "*Edit me*" at top right to say "Wind Indexed".
- Now select the Rating tab and uncheck the "Inherit" box under "*Competitor rating values*", now change radio button selection to "*Use wind indexed ratings*" and set the wind character strings that will appear for selection when you enter race data, for example "Zephyr, Light, Medium, Strong" without the quote marks.
- Click OK button twice and the save the file.
- When you have race finish data to enter, right-click the column header for the race in question and select "*Edit race*" and create two starts, one for the default rating fleet and one for the wind indexed rating fleet selecting the appropriate competitors for each using Fleet names.
- Now edit default rating fleet start and set finish type to elapsed or finish time as appropriate and if using finish time times not elapsed times enter start time in HHMMSS format. Enter any other race data you would like. Click OK.
- Now edit wind indexed fleet and enter all the same information but in addition select from the "Wind index" drop down list the wind range you think appropriate. Click OK and click OK a second time.
- Now enter finish sheet data for the competitors using *Sail Number Wizard*.
- Score series and publish results. **Note** - that the wind indexed rating value used for each competitor will only appear in the individual race results tables. The value shown in the rating column of the overall series table is the default rating.

## THE STEPS IN DETAIL!

As the heading says the steps outlined above will be gone through in detail with screen captures included.

### CREATE WIND INDEXED RATING FILE

Instructions for creating a rating file are documented in the Sailwave User Guide & Reference Manual available for download from the Sailwave web site, see link above in Overview section.

There is only one known MNA that provides wind indexed ratings and the information has not been updated since 2017 and the data has not been put in a Sailwave compatible format. The information available for download from US Sailing is in PDF files.

It is going to be left to those who want to use wind indexed ratings to determine what the appropriate rating values are for the wind ranges. I have used four wind ranges as the example in this document but that is not a restriction, you could have more less wind ranges.

It is possible to add wind indexed rating values to the RYA PY rating files downloadable from the Sailwave web site - <https://www.sailwave.com/rating-files-library>. The editing needs to be done carefully; the string of rating values that will correspond with your wind descriptions, for example "Zephyr, Light, Moderate, Strong", must appear in the column immediately after the default rating column of the CSV file.

If creating the rating file using a spreadsheet, the string of rating values must be entered with a single quote (') at the start of the string, to make the spreadsheet accepts the data as a character string and not as a comma separated large number, an example string might be '950,935,930,925 for four wind indexed ratings.

The data in the wind indexed CSV rating file should look like this in a text file editor:

```
PY,FIREBALL,952,"955,,950,945",,,,,,,,,FIREBALL,2,S,C,952,0,1781,,
PY,OSPREY,930,"940,935,,925",,,,,,,,,OSPREY,2,S,C,930,2,800,,
```

For my example wind speed ranges of Zephyr, Light, Medium, Strong; the Fireball uses the default rating of 952 for the Light wind speed range, Whereas, for the Medium wind speed range the Osprey uses the default rating of 930, You can specify values for each of the wind ranges if that is more appropriate.

**Note** – the data to the right after a lot of commas is the data from the RYA spreadsheet which is the basis of the rating PY rating file available for download from the Sailwave web site. The RYA spreadsheet has been reformatted to have the Sailwave required data at the start of the line. The extra data to the right and all the extra commas can be deleted.

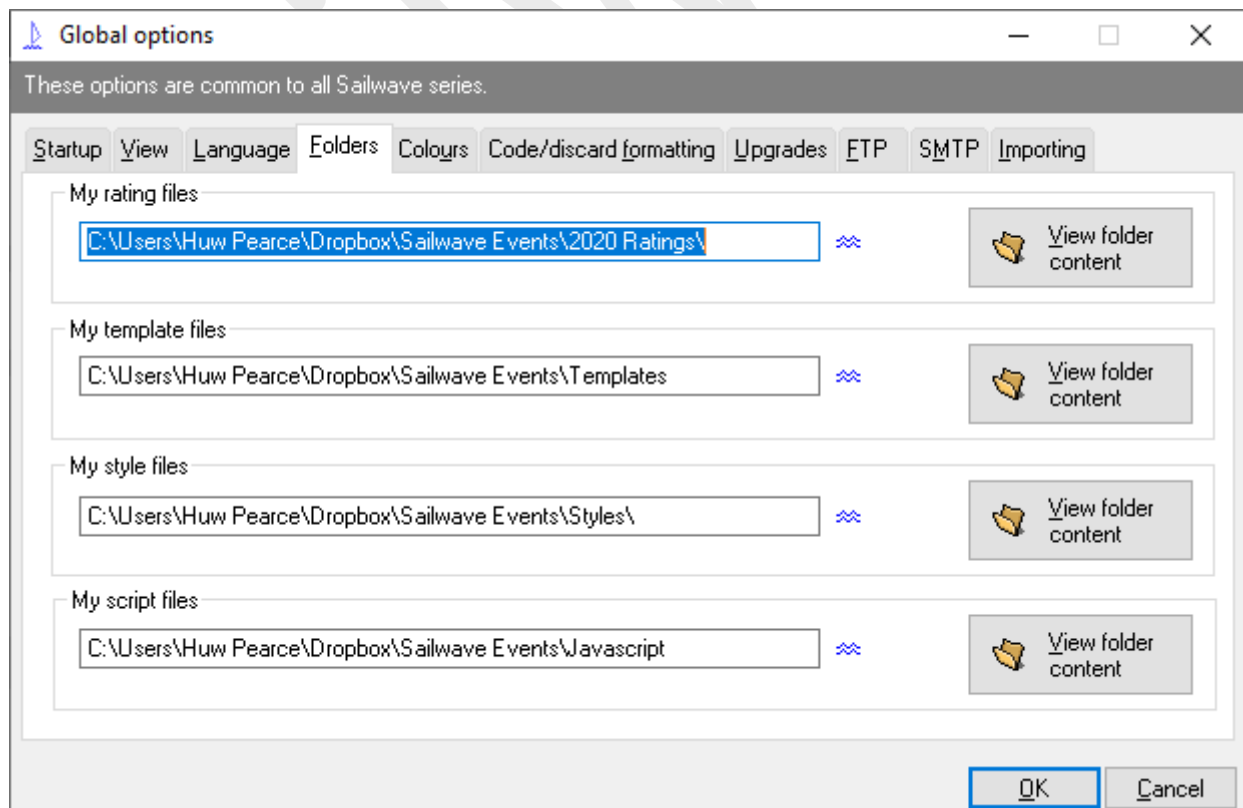
Note – if you class name configuration string includes a comma (,) then the string must be enclosed with double quotes (“class name, configuration”). For example, “Mirror – doublehanded, no spinnaker”.

**Note** - the format of the CSV rating file might change in the future as there are discussions taking place on a format and content which will be compatible with other scoring systems. This is to try and make it easier for scorers to reference the correct rig configuration for uploading the results to the RYA PYS on-line web site. For example, a Mirror dinghy which can be sailed in several different configurations:


- Single handed – main but no spinnaker & no jib
- Single handed – main & jib but no spinnaker
- Single handed – with main, jib & spinnaker
- Double handed – main & jib and no spinnaker
- Double handed – main, jib & spinnaker

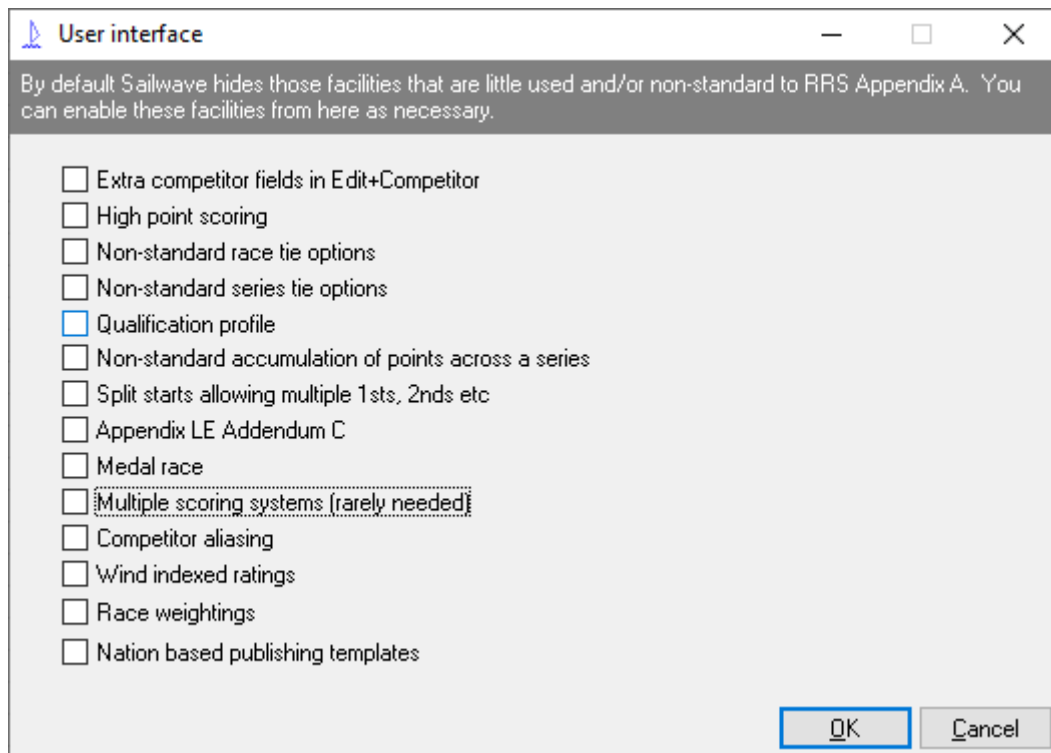
### **PUT RATING FILE IN RATINGS FOLDER**

The CSV file containing wind indexed ratings, in the format required by Sailwave, has to be in the ratings folder being pointed to on the Folder tab of *Set up | Global options* on the [Menu Bar](#).



## SELECT WIND INDEX AND ALIASES OPTION

To be able to dual score using default ratings and wind indexed ratings additional, usually hidden, functionality needs making visible. To enable dual scoring the wind indexed ratings and aliases need to be selected from *Set up | User interface* on the *Menu Bar* or by clicking  button on *Tool Bar*.



## ENTER COMPETITORS

Enter your competitors either manually or by using a CSV file. For information on how to import competitors using a CSV file read the *Sailwave User Guide & Reference Manual*.

When entering the competitors manually as long as you enter the class name **exactly** the same as it is in the rating file then the ratings will be automatically picked up. You can also use the drop-down list of classes to select the class the competitor is sailing.

If you have imported competitors using a CSV file then the ratings can be auto-updated when you score the series. See the section on setting up scoring system later in this document.

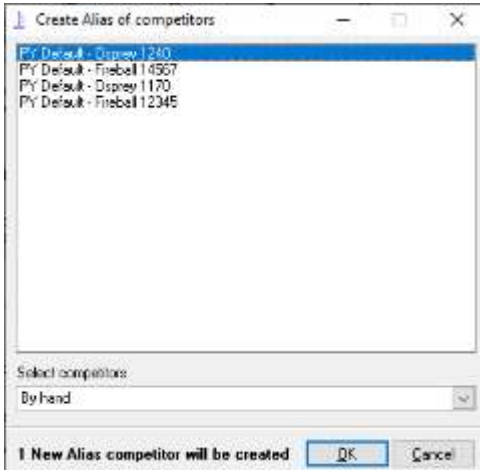
## 'TAG' COMPETITORS

**Important** - Add to each competitor an identifying string for which fleet they are into the Fleet field / column. The easy way to do this is as part of the import using a CSV file. However, if you forgot it can be done easily in Sailwave using the *Tools | Set competitor field* from the *Menu Bar*.

An appropriate fleet name for the initial set of competitors might be "Default PY" or as I have used "PY Default".

## CREATE COMPETITOR ALIASES

To create aliases for all competitors, use the *Edit | New competitor aliasing* from the *Menu Bar*.



Use the drop-down list at the bottom to select all competitors or select the competitors you want to alias by clicking each one. You can also use the standard Microsoft commands of shift click and ctrl click.

When you have selected the appropriate competitors to be aliased click the OK button.

All competitors in the window were selected and what then appears in Sailwave is shown in the following screen capture.

*Note – if you want more than one extra fleet of the competitors as aliases create the first set of aliases and then move to the next step /section "Tag' Aliased Competitors" to change the fleet name before creating a second, third or more set of aliases. After the creation of each set of aliases change the fleet name before creating the next set of aliases.*

Rank	Tally	Fleet	Class	SailNo	PY	R1	R2	Total	Nett
3rd	1	PY Defaul Osprey	1170	930	2.0	3.0	5.0	5.0	
1st	2	PY Defaul Osprey	1240	930	1.0	2.0	3.0	3.0	
4th	3	PY Defaul Fireball	12345	952	3.0	4.0	7.0	7.0	
2nd	4	PY Defaul Fireball	14567	952	4.0	1.0	5.0	5.0	
@ 3rd	1	PY Defaul Osprey	1170	930			5.0	5.0	
@ 1st	2	PY Defaul Osprey	1240	930			3.0	3.0	
@ 4th	3	PY Defaul Fireball	12345	952			7.0	7.0	
@ 2nd	4	PY Defaul Fireball	14567	952			5.0	5.0	

I have sorted the competitors on the aliased column, so they are grouped together and they identified in the column with an @ sign. These are a complete copy of the competitor data that is why they show after creation with the same fleet name.

There is a way to import aliased competitors from a CSV file, which for big fleets or multiple fleets could be useful. If this is of interest, then please get in touch. The document to ask for is *“Sailwave - Importing Competitors as aliases”*.

### ‘TAG’ ALIASED COMPETITORS

Now to change the fleet name for the aliased competitors. This can either be done manually by double-clicking in the fleet column for each competitor, or by using the *Tools | Set competitor field* from the *Menu Bar*.

The screenshot shows a dialog box titled "Set competitor field". At the top, it says "These competitors will be changed" followed by a text input field containing "Alias>0". To the right of this field is a button with a trash icon labeled "Select competitors". Below this is a "Field to change" dropdown menu currently set to "Fleet". Underneath is an "Action" section with two radio buttons: "Set this value" (which is selected) and "Copy value from another competitor field". The "Set this value" option has a dropdown menu showing "PY Wind Indexed". The "Copy value from another competitor field" option has a dropdown menu showing "Club". At the bottom of the dialog is an "Operation" section with three radio buttons: "Replace existing" (selected), "Only replace if field is currently blank", "Insert before", and "Append after". At the very bottom are "OK" and "Cancel" buttons.

The selection of the competitors who will have their fleet field changed is done by clicking the *“Set competitors”* button. In the window that appears you will apply to criteria to select the competitors to have their Fleet name changed:

Alias > 0 and Fleet = “the only name you have” so far. These can all be set / selected using the drop-down lists.

In my example you can see how things look after setting the competitor selection criteria. As this was the first set of aliased competitors you can leave out the Fleet selection criteria, but you will need to include when changing Fleet name of second and any subsequent aliased competitors.

**Note** - the Fleet name must always be

the Fleet name of the original set of competitors.

If you need another set of competitor aliases, then go back to the previous section *“Create competitor aliases”* and repeat, followed by the actions in this section.

### CONFIGURE SCORING SYSTEM

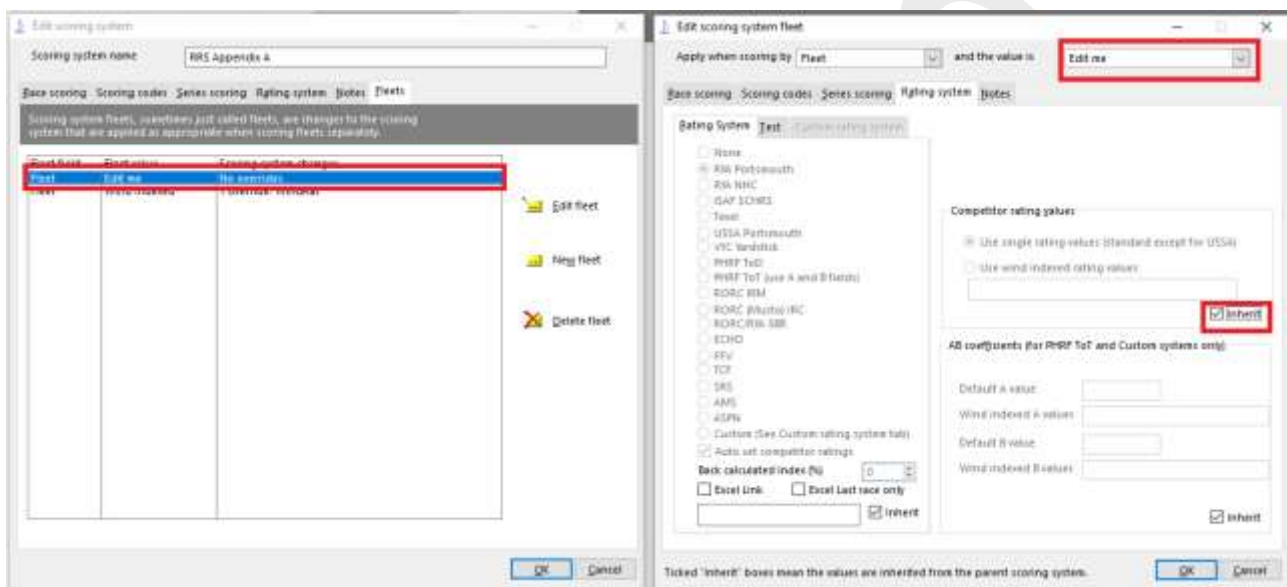
The scoring system is first configured for the original set of competitors as a ‘default’ scoring system on which all others will be based. The principle things to be set are: -

- the rating system for the initial set of competitors

- any scoring code changes from the default RRS Appendix A defaults. Note the RRS – Appendix A scoring code defaults are for a short series or regatta and may not be appropriate for a long series. Any changes should be written into the SI's.

*To ensure that default rating and the wind indexed rating for each competitor are set, it is a good idea to check the box labelled “Auto set competitor ratings” on the “Rating tab” of Scoring system.*

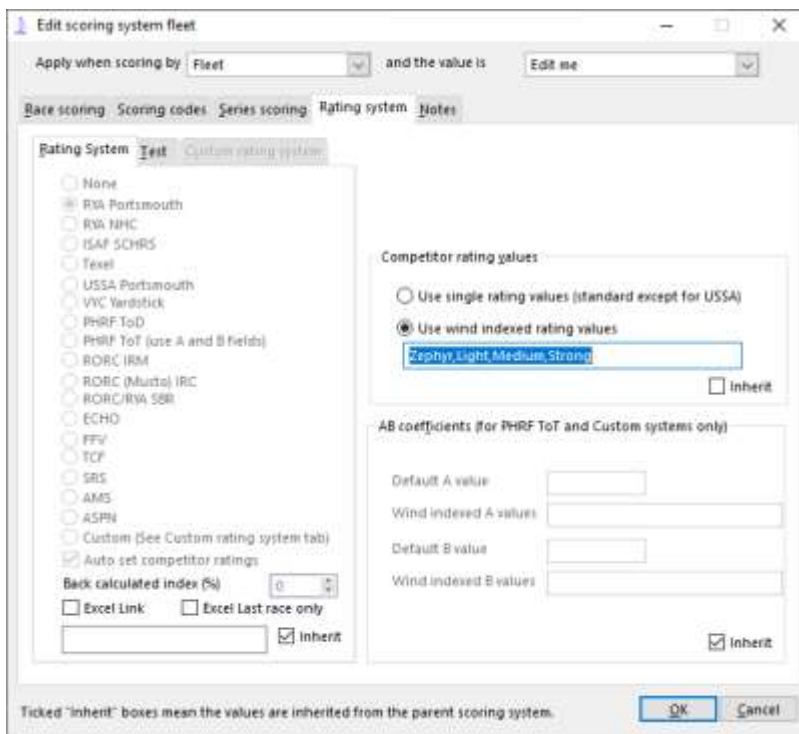
Once the ‘default’ scoring system is configured, the changes for the aliased competitor fleets can be configured. This is done by going to “Scoring system | Fleets tab” and clicking the New button.



A new fleet appears – the red boxed area in left side of image above. When you click the edit button, or double click the highlighted new fleet, the right window in above image appears. The first thing to change is ‘Edit me’ in red boxed area top right by selecting the fleet the scoring exceptions you are going to make will apply to from the drop-down list.

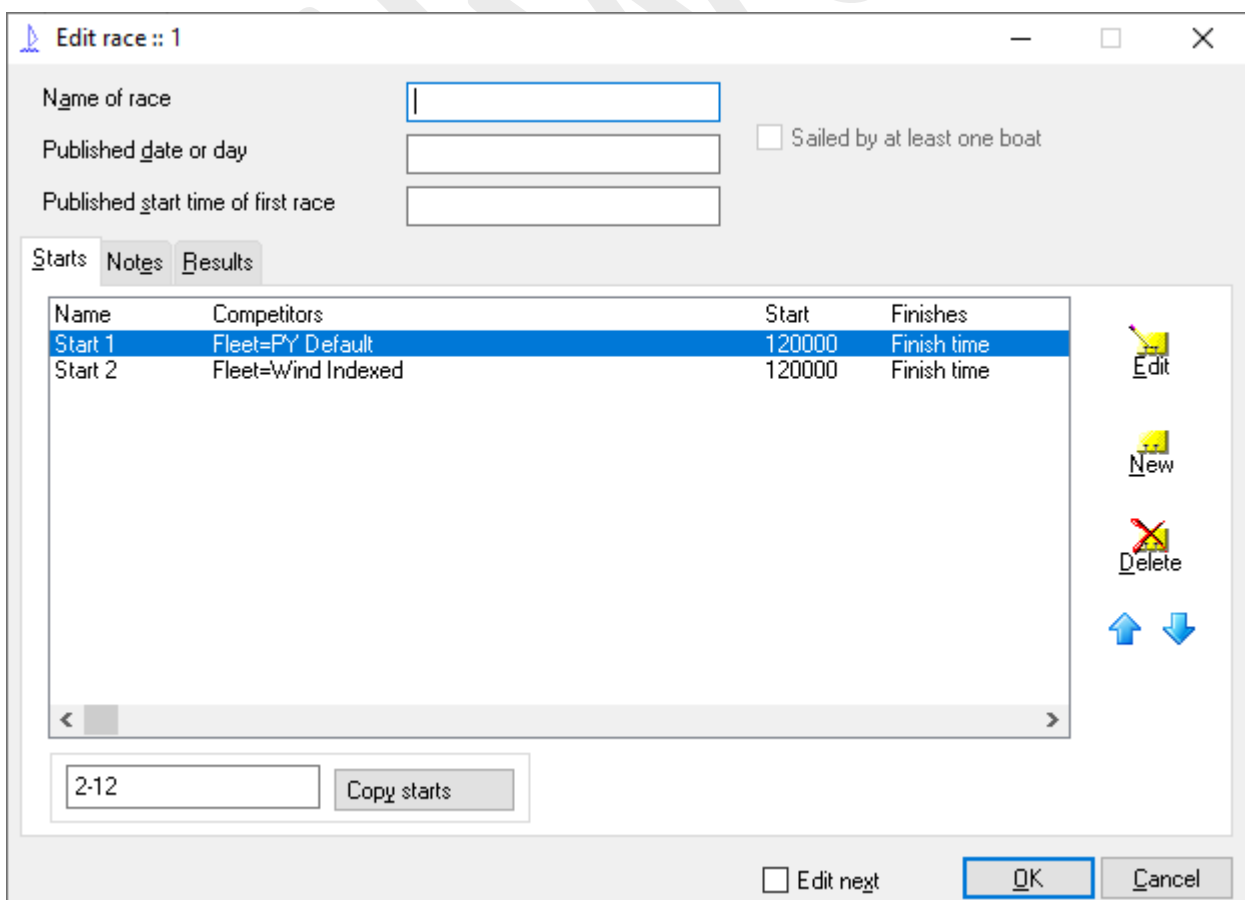
As we are discussing configuration for dual scoring default PY ratings and Wind Indexed PY ratings the next step is to remove the check mark highlighted in the red box in above image. Removing the check mark will allow you to select the use “Wind indexed rating values”.

In the box under “Use wind indexed ratings” enter a comma separated list of wind ranges. For example “Zephyr,Light,Medium,Strong”.



Click the OK buttons to save your configuration before moving on to next step.

### CONFIGURE RACE DATA



A separate start is required for each fleet and this what is going to be outlined now.

Right click the first race column header and select “*Edit race*” – the above screen capture image is for the set-up in my imaginary series.

The screen capture image shows the two starts that are required as part of the set-up to dual score Default PY ratings and Wind Indexed ratings using one Sailwave file and only entering finish data once. I have edited Start 1 and Start 2 for a default start time of 120000 and using finish times. Note – I always enter a 6-digit start time in HHMMSS format with no time separator.

This start configuration can be copied to the other races in your series as the starting point for each race. Set the races to which you want to copy the starts and click the “*Copy starts*” button and accept you want to do this by clicking OK in the window that pops-up. In the screen capture above the starts would be copied to races 2 to 12 inclusive on clicking “*Copy starts*” button.

All races will have to have their race data set appropriately for each individual race. The start time for each start in each individual race will have to be set to the value for that race. **Note** – the start time for both fleets will be identical.

For start 2 in each race you will need to select the wind speed range appropriate for the race from the drop-down list of names you created earlier in section “*Configure scoring system*”.

Click OK buttons to save information just entered.

## ENTER RACE FINISH DATA

Now enter the finish sheet data using the “*Start number wizard*” in the normal way. You only have to enter the finish data once for each competitor as Sailwave automatically duplicates the data to the aliased record for the competitor.

Note – to speed data entry, enter finish times in HHMMSS format without a time separator.

## SCORE SERIES

To score the series use the second scoring option “*Score groups of competitors separately – scoring system is applied to each group*” and leave grouping filed as Fleet. Sailwave will use the configured scoring set-up appropriate to each group, in this example Fleet, automatically.

The result results will be displayed for each Fleet having used the appropriate scoring configuration.

## ***PUBLISH RESULTS***

Now publish the results as normal.

Note – if you have set the Rating field for publication it will display the default rating value and not the wind indexed ratings in the series summary tables. In the Overall Series table, if they are set for publishing, the rating column labelled contains the default / base/ starting rating for the series.

In the Individual Race tables, if published, the rating column shows the rating being used to calculate the corrected times for that race.

Sailwave